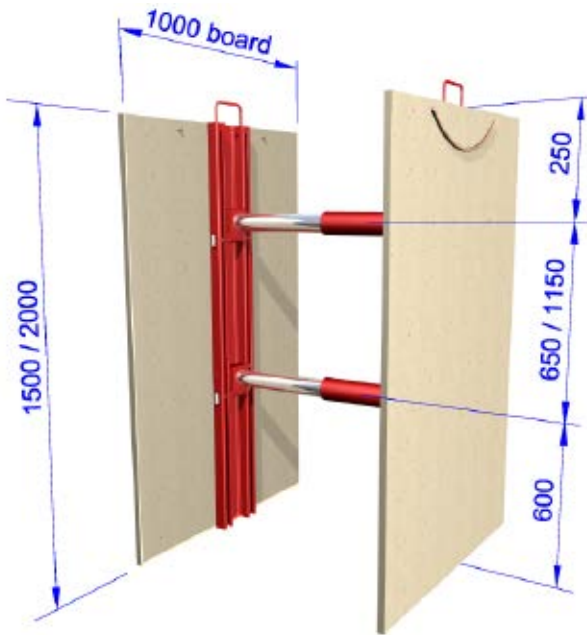


Aluminium Vertishore



SWL = 20kN/m (on Vertishore)

Desc.	Product ID	Weight* (kg)
1500	1.014	28
2000	1.0141	35

* Assembled weight (excluding boards) with type A struts

Pre-assembled, light weight, two sided hydraulic waler strut system designed to be installed from ground level directly against a soil face in the vertical plane. Suitable for trenches up to 2.0m deep and 1.4m wide. The System can be installed by one person and is usually specified for short term utilities type trench work where the ground is considered self supporting and capable of arching a min. 1.5m between preloaded hydraulic vertical supports for the duration of the works. Backing boards are available to prevent localised pockets of loose material entering the excavation. Personnel should only enter and work in the space between two vertishores.

A competent person should always inspect the excavation before allowing access to ensure that all the struts are pre-loaded and bearing directly onto the soil, the exposed soil faces are self supporting with no evidence of water ingress or very loose material.

Vertical support must be provided at a max. 1.5m horizontally.

Always install and remove the system from ground level and away from any potentially unstable edges. Vertishores are supplied with an installation kit, including a pump unit, lowering hook and valve release tool.

Available hydraulic struts
Type A : 550-900mm
Type B1: 850-1375mm

